

Microsoft Exchange Server

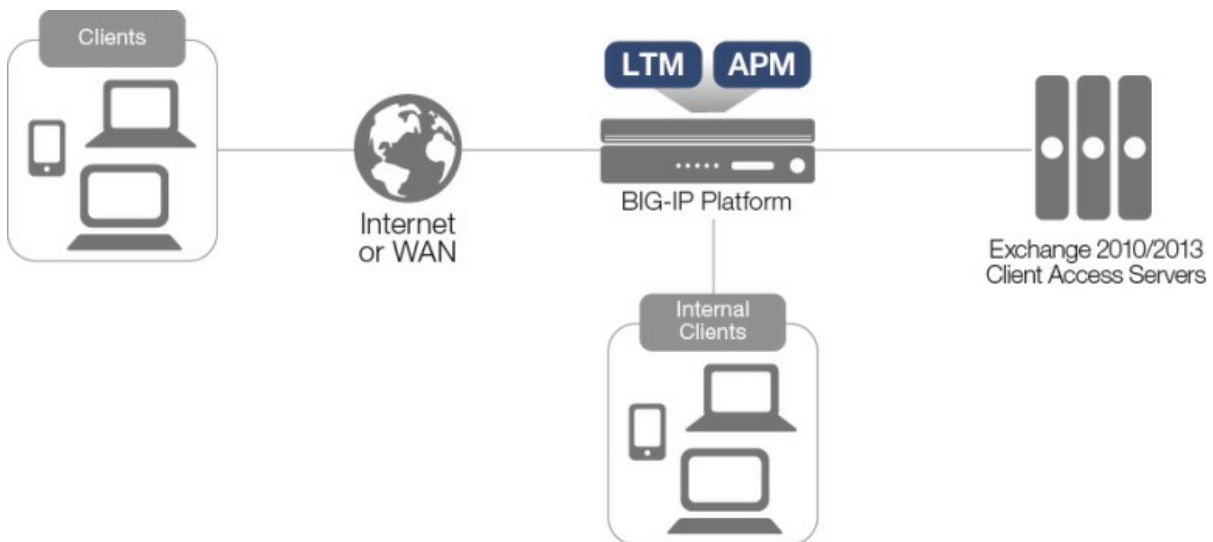


Joe Jordan, 2014-24-01

F5 works closely with Microsoft to ensure we are delivering the best possible technology and deployment guidance to support highly available and scalable Exchange Server deployments.

F5 performs extensive internal engineering and testing to develop deployment guides and associated iApp templates for Microsoft Exchange Server. The guides and templates enable organizations to easily provide additional performance, security and availability for Exchange Server deployments, ensuring maximum ROI with the minimum amount of work.

The following simple, logical configuration example shows one of the ways you can configure the BIG-IP system for Microsoft Exchange Server.



For specific information on Microsoft Exchange 2016, see <https://devcentral.f5.com/codeshare/exchange-2016> and for Exchange 2013/2010, see <https://devcentral.f5.com/codeshare/microsoft-exchange-2010-and-2013-iapp-template>.

Go to <https://f5.com/solutions/deployment-guides> to find the appropriate deployment guide for quickly and accurately configuring the BIG-IP system for Microsoft Exchange Server. If you have any feedback on these or other F5 guides or iApp templates, leave it in the comment section below or email us at solutionsfeedback@f5.com. We use your feedback to help shape our new iApps and deployment guides.

F5 Networks, Inc. | 401 Elliot Avenue West, Seattle, WA 98119 | 888-882-4447 | f5.com

F5 Networks, Inc.
Corporate Headquarters
info@f5.com

F5 Networks
Asia-Pacific
apacinfo@f5.com

F5 Networks Ltd.
Europe/Middle-East/Africa
emeainfo@f5.com

F5 Networks
Japan K.K.
f5j-info@f5.com